



Perimeter Patrol™

PTE0321 | PTE0322

Overview:

Perimeter Patrol™ adds PC connectivity, communications and control to your security electric fence, giving you the peace of mind that comes from being able to check that your fence is working wherever you are.

Perimeter Patrol™ runs on a standard Microsoft Windows PC connected to JVA Security Electric Fence Energisers via PAE223 (USB), PAE100 (RS485) or PTE0248 (TCP/IP Ethernet) adaptors.

Perimeter Patrol™ Lite:

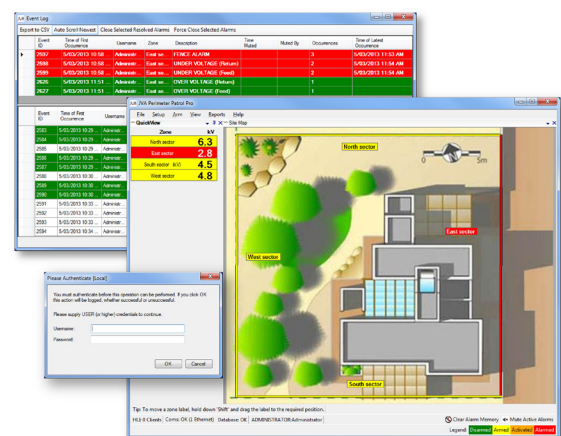
The Perimeter Patrol™ Lite software package enables up to four energisers to be monitored and controlled from a PC. Perimeter Patrol™ Lite is free for owners of Z-series energisers.

Perimeter Patrol™ Pro:

Perimeter Patrol™ Pro is commercial software. It provides the functionality required for industrial or commercial installations.

For more information:

See the Website at: <http://www.jva-fence.com.au>



Version Comparison Table:

| Feature | Lite | Pro |
|--|------|-----|
| View & Control Energiser Zones [1] | Yes | Yes |
| View & Control Zone Monitors | No | Yes |
| Support Multiple Sectors Per Zone [2] | No | Yes |
| Map-Oriented Zone Mimic Screen | Yes | Yes |
| Automatically Control on Schedule | Yes | Yes |
| Alarm Display and Sound | Yes | Yes |
| Email on Alarm | Yes | Yes |
| Ethernet (TCP/IP) Communication Mode | No | Yes |
| Serial Communication Mode | Yes | Yes |
| User Authentication | No | Yes |
| Full Screen Mode Preventing Access to Other Applications | No | Yes |
| Event Logging with Viewer and Automatic Archival | No | Yes |
| Software Keypad | No | Yes |
| Administrator's Full System Controller | No | Yes |



Specifications:

| | | |
|--|---------------|--|
| Operating System | | Microsoft Windows 7, 8, 10 and Windows Server |
| Logging Database (not available in Lite) | | Microsoft SQL Server Compact |
| Communications Interface | | TCP/IP or Serial Port |
| Minimum CPU | | Intel or compatible Pentium 4 1GHz or faster processor |
| Minimum RAM | | 8GB recommended on Windows 7, 8, 10, Server |
| Scheduled Control | Repeats | Weekly |
| | Granularity | 30 Minutes |
| Email Support | | SMTP, SSL, Authentication |
| Maximum Number of Zones | Lite | 4 |
| | Demo | 20 (30 day trial – Full feature set) |
| | Pro | 500 (limit dependent on system configuration) |
| User Levels (not available in Lite) | User | View Zone Voltages and Alarms |
| | Supervisor | All User Tasks Above Control Energisers Close Resolved Alarms Exit Full Screen Mode |
| | Administrator | All User and Supervisor Tasks Above Modify System Configuration |
| Integration of Legacy Equipment | | Via contact inputs and relay outputs |

Product Codes:

| | |
|---------|--|
| PAE0321 | Perimeter Patrol 4 Zone Base System - Upgrades Lite mode to Pro mode |
| PAE0322 | One extra zone for Perimeter Patrol Pro - Add as many extra zones to Perimeter Patrol Pro as required |
| PAE0325 | Enables Perimeter Patrol HLI Server - Required for Client/Server interface using Windows DLL (Dynamic Linked Library) |

[1] Any energiser from the JVA Z-series range (excludes ZM-series zone monitors).

[2] A zone is defined as a section of fence powered by a single energiser. A sector is defined as a sub-section of that zone. The ZM20 for example supports up to 20 sectors per zone. Where a single energiser is powering a large zone, having multiple sectors can help in locating a fault more precisely.

