



ELECTRIC FENCING

**QUALITY AGRICULTURAL
ELECTRIC FENCING PRODUCTS**



2021



Established in 2007, JVA is an Australian based multinational company whose focus is on delivering clever, high quality Electric Fencing products by leveraging our many years of marketing, design and manufacturing experience. Our aim is to deliver great value products backed by local service.

JVA's range of Electric Fence Energisers are designed by Australian Engineers based in Narangba, Queensland. Years of design and research have gone into making these as powerful, safe and reliable as possible. The functionality of our Energisers is expandable through the addition of TCP/IP, GSM and other monitoring solutions.

CONTENTS

Portable Energisers	3
Solar Energisers	4
Mains/Battery Energisers	5
Solar Panels	6
Wi-Fi Anywhere™	7
IP Monitors	8
IP Energiser App	9
Fence Station	10
Cloud Router & ZM1 Monitor	11
Jumbo Energiser Monitors	12
Virtual Keypad	13
Other Monitoring Equipment	14
Accessories	16
Hardware	18
Cables, Politape & Poliwire	20
Tape Gates	20
Fence Heights	21
Security	22
Equine	23

Cover photo courtesy of Rachel Claire at Pexels

Perfect for temporary electric fences, strip grazing, horse riding events, holding paddocks or just keeping fido out of the garden. These portable units are easy to use yet pack a kick big enough to hold your animals where you want them. These are the safest of Electric Fence Energisers with output energy limited to a fraction of the maximum allowed by law.

JVA Energisers have patented DC/DC inverter technology which minimises battery usage while increasing reliability.



RSG1 is a Rechargeable Electric Fence Energiser specifically designed for horse eventing or trail riding. It will run for 4 to 5 days after a re-charge and can be recharged from a 12V cigarette lighter socket (lead included) or 240Vac with the supplied plug pack. Perfect for any short term electric fencing application where you need an easy, portable solution.

Features:

- Integrated rechargeable battery
- Recharge from ute, truck, car or any mains socket
- Simple, safe and easy to set up
- Sealed and rugged, UV stable enclosure

PET Electric Fence Energisers make animal control a breeze. The PET100 and PET500's small rugged design makes it suitable for most portable electric fence applications. Perfect for Pet control, strip grazing and small horse enclosures at events.

Features:

- 12V DC, mains or solar powered¹
- Incredibly small for ultimate portability
- Sealed and rugged, UV stable enclosure
- Power surge protection
- Low battery warning

¹Solar panel not included



Model	Item #	Maximum Distance	Power Supply	Peak Output Voltage	Stored Energy	Output Energy	Dimensions H x W x D (mm)	Product Weight
RSG1	PTE2235	Up to 1km	Internal rechargeable battery or 12V DC	9.2 kV	100mJ	80mJ	180 x 155 x 115	1.6kg
PET100	PTE2237	Up to 2km	12V DC	10kV	200mJ	110mJ	127 x 80 x 53	330g
PET500	PTE2248	Up to 5km	12V DC	9.5kV	700mJ	500mJ	127 x 80 x 53	380g

SOLAR ENERGISERS

JVA offers a range of solar powered Electric Fence Energisers which are ready to go straight out of the box. The rechargeable battery and integrated solar panel saves time and money, and is designed to give years of trouble free service.



SV2 Electric Fence Energiser is the perfect portable strip grazing solution. It also packs enough punch to be great in small permanent electric fence setups.

Features:

- Fully integrated solar panel, battery, and mounting bracket
- Highly efficient and intelligent digital circuit
- Sealed and rugged, UV stable enclosure

SV5 Electric Fence Energiser is great in small to medium sized permanent electric fence setups. Slightly larger than the SV2, the SV5 is still portable and easy to install.

Features:

- Fully integrated solar panel, battery, and mounting bracket
- LCD shows fence voltage, stored energy and battery voltage
- Power on demand (automatically increases power when required)



SV10 Electric Fence Energiser is great in medium to large sized permanent electric fence setups. Slightly larger than the SV5, the SV10 is still portable and easy to install.

Features:

- Fully integrated solar panel, battery, and mounting bracket
- LCD shows fence voltage, stored energy and battery voltage
- Power on demand (automatically increases power when required)
- Now available with a built in Lithium battery



Model	Item #	Maximum Distance	Peak Output Voltage	Stored Energy	Output Energy	Dimensions H x W x D (mm)	Product Weight
SV2	PTE2234	Up to 2km	6.4kV	0.45J	0.1J	285 x 155 x 200	2.4kg
SV5	PTE2236	Up to 5km	7.5kV	0.75J	0.5J	350 x 230 x 280	5.8kg
SV10	PTE2161	Up to 10km	8.0kV	1.1J	0.8J	350 x 230 x 280	5.8kg
SV10Li	PTE2161a	Up to 10km	8.0kV	1.1J	0.8J	350 x 230 x 280	4kg

If versatility is what you need, then these are the best choice. Mains/Battery or 'Universal' powered Energisers are a great option if you are not sure that you will always have 240V available. Powered by 240Vac mains, or 12V battery, these units certainly make no sacrifices for their versatility, in fact they are even more powerful than our original mains only units.



Small MB1.5, MB3 and MB4.5 Electric Fence Energisers are suitable for small to medium sized permanent fence installations

Features:

- LED Energiser and fence status indicator
- Large, easy to use fence terminals
- O-ring sealed enclosure for ant and moisture protection

Large MB8, MB12 and MB16 Electric Fence Energisers now include built in Wi-Fi and can be controlled from anywhere in the world using JVA's free IP Energiser Controller App. These Energisers also include Auto-sync™ Technology which helps keep your fences safe.

Features:

- IP Energiser® technology with built in Wi-Fi
- LCD shows fence voltage, stored energy and battery voltage
- Power on demand, automatically ramps up power when needed
- Bi-Polar or Conventional outputs



Model	Item #	Maximum Distance	Peak Output Voltage	Stored Energy	Output Energy	Dimensions H x W x D (mm)	Product Weight
MB1.5	PTE2254	15km	8.0kV	1.5J	1.5J	180 x 155 x 115	1.7kg
MB3	PTE2255	30km	8.0kV	3.3J	3.0K	180 x 155 x 115	1.7kg
MB4.5	PTE2233	45km	8.6kV	6.6J	4.5J	180 x 155 x 115	1.7kg
MB8	PTE2140	80km	8.2kV	11J	8.6J	250 x 180 x 136	3.1kg
MB12	PTE2141	120km	8.1kV	16.5J	12.3J	250 x 180 x 136	3.1kg
MB16	PTE2157	160km	8.8kV	24J	16J	250 x 180 x 136	3.1kg

SOLAR PANELS

Suitable for most Electric Fence Energisers, JVA's range of Solar Panels are a quick, simple way to have a portable solar fence Energiser - secure to any star picket, attach a 12V lead acid battery and then connect your Energiser.



Small SA5 and SA10 Solar Panels are suitable for small Electric Fence Energiser such as the JVA PET Energisers.

Features:

- 5W or 10W Solar panel, and mounting bracket
- Sturdy aluminium bracket

Medium SA20 and SA50 Solar Panels are suitable for medium Electric Fence Energisers such as the MB1.5, MB3 and MB4.5 Energisers.

Features:

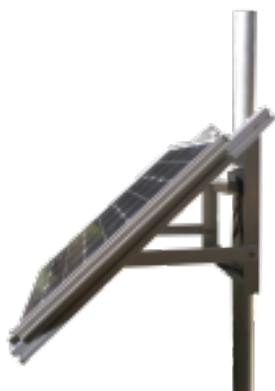
- 20W or 50W Solar panel, solar regulator, and mounting bracket
- 12A Solar Regulator
- Sturdy aluminium bracket



Large SA100 and SA150 Solar Panels are suitable for larger Electric Fence Energisers such as the MB8, MB12 or MB16 Energisers.

Features:

- 100W or 150W Solar panel, solar regulator, and mounting bracket
- 12A Solar Regulator
- Sturdy aluminium bracket



Model	Item #	Specification	Recommended Energisers	Dimensions H x W x D (mm)	Product Weight
SA5	PTE2273	5W Solar	PET100	270 x 250 x 130	1.4kg
SA10	PTE2275	10W Solar	PET100, PET500	420 x 350 x 160	2.3kg
SA20	PTE2270	20W Solar	MB1.5	550 x 280 x 140	2.3kg
SA50	PTE2271	50W Solar	MB3, MB4.5	790 x 540 x 70	7.3kg
SA100	PTE2272	100W Solar	MB8, MB12	1000 x 780 x 80	11.1kg
SA150	PTE2274	150W Solar	MB12, MB16	1490 x 780 x 90	15.2kg

The recommendations above are reliant upon good solar coverage within your area. Please ensure you check www.jva-fence.com.au/solar.php to ensure you purchase an adequate solar panel for your Energiser.



JVA's ground breaking Wi-Fi Anywhere™ combines the power of the sun with a USB modem and any Australian standard SIM card to produce Wi-Fi from cellular networks. Designed to connect devices like JVA IP Energizers®, IP Cameras, Automatic Gates, Weather Stations, Pumps, Water monitors and Alarm systems to the Internet.

Since the Wi-Fi Anywhere™ is solar powered, it is free to run, and can be placed anywhere within 3G/4G cell phone coverage. It can even operate in marginal signal areas with the addition of a larger antenna.



Small WA20 and WA50 Wi-Fi Anywhere™ units are suitable to work with smaller IP Energisers and accessories.

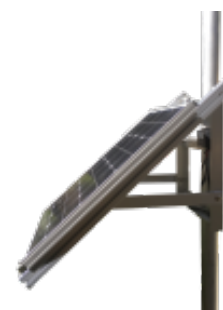
Features:

- Small size makes it great for portable systems
- Battery level indicator (external battery required)
- 20W or 50W solar panel works throughout Australia
- Includes \$5 prepaid SIM

Large WA100 and WA150 Wi-Fi Anywhere™ units are suitable to work with larger IP Energisers™, IP Cameras, Automatic Gates, Weather Stations, Pumps, Water monitors and Alarm systems.

Features:

- Battery level indicator (external battery required)
- 100W or 150W solar panel works throughout Australia
- Includes \$5 prepaid SIM



WA20M combines the WA20 Wi-Fi Anywhere™ with our IP Monitor to provide real-time monitoring of your electric fence. Being solar powered it can be placed anywhere it is needed, for example at the end of your fence.

Features:

- Small size makes it great for portable systems
- Battery level indicator (external battery required)
- IP monitor connects any energiser to the free JVA IP Controller® App
- 20W solar panel works throughout Australia
- Includes \$5 prepaid SIM

Model	Item #	Specifications	Dimensions H x W x D (mm)	Product Weight
WA20	PTE2700	20W Solar Wi-Fi Anywhere™	550 x 280 x 140	2.3kg
WA20M	PTE2701	20W Solar Wi-Fi Anywhere™ and IP Monitor	590 x 290 x 180	5kg
WA50	PTE2702	50W solar Wi-Fi Anywhere™	790 x 540 x 70	7.3kg
WA100	PTE2703	100W Solar Wi-Fi Anywhere™	1000 x 780 x 80	11.1kg
WA150	PTE2704	150W Solar Wi-Fi Anywhere™	1490 x 780 x 90	15.2kg

The recommendations above are reliant upon good solar coverage within your area. Please ensure you check www.jva-fence.com.au/solar.php to ensure you purchase an adequate solar panel for your Energiser.

IP MONITORS

JVA's IP Monitor is an Internet-connected Electric Fence Monitor and optional Switch. The monitor connects any Energiser to the free JVA IP Controller® App, to allow you to instantly see the status of your configured fence from anywhere in the world. The monitor will alert you should the fence voltage or current go beyond a configurable threshold.



IPM allows you to monitor an existing fence line using JVA's free IP Energiser Controller App.

Features:

- Mains or 12V Battery operation
- Built in Wi-Fi for direct Internet connection
- Can use 3G/4G cellular network with a separate modem/hotspot

IPM-R contains a high voltage relay allows you to also control the connected fence, switching it on or off remotely.

Features:

- Mains or 12V battery operation
- Built in Wi-Fi for direct Internet connection
- Can use 3G/4G cellular network with separate modem/hotspot
- Switch your fence on/off - Max 36J energiser



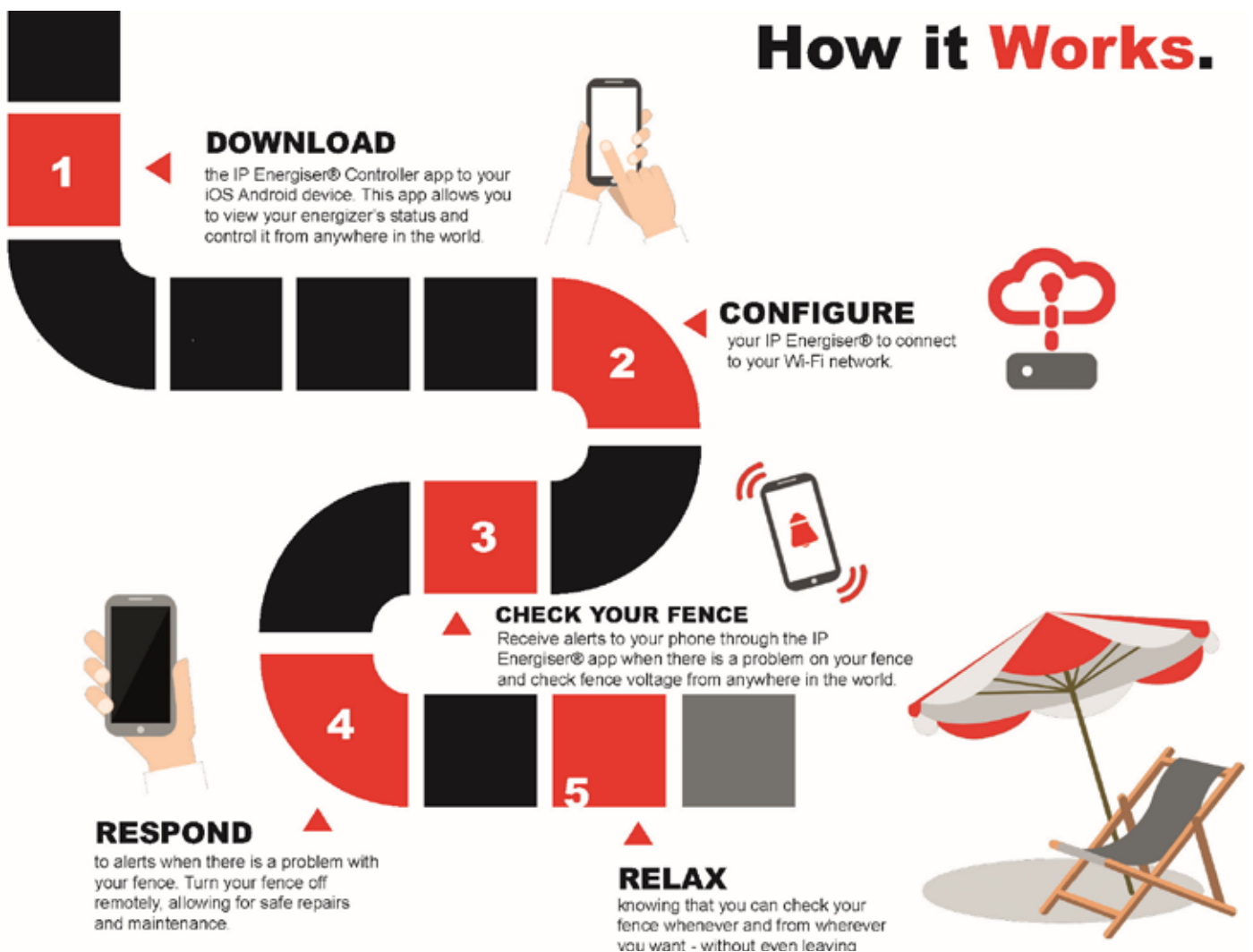
Model	Item #	Power	Relay	Dimensions H x W x D (mm)	Product Weight
IPM-R36	PTE2603	12V DC, 200mA max	Up to 36J energiser	180 x 155 x 115mm	1.1kg
IPM-R16	PTE2605	12C DC, 120 mA max	Up to 16J energiser	180 x 155 x 115mm	1.1kg
IPM	PTE2606	35 mA max	Monitor only	180 x 155 x 115mm	1.1kg

The JVA IP Energiser® and IP Energiser Controller® app combine the latest technology to provide you with an all-in-one solution to electric fence management. With in-built wireless capabilities, the Energiser works by sending updates and alarms to your phone via your home or farm's local Wi-Fi network. When problems do occur, the IP Controller® keeps you in control, allowing you to turn the Energiser off and on remotely at the touch of a button.

Features:

- Real-Time Notifications
- Monitor & Control Multiple Electric Fences in Real-Time
- Works with JVA's range of IP Energisers™ and IP Monitors

How it Works.



To find out more and try controlling an IP Energiser™ yourself, go to
<https://www.jva-fence.com/agric/ipenergizer/index.php>.

FENCE STATION

A monitored electric fence reduces maintenance by reporting whenever there is a fault and by allowing you to check the fence from wherever you are. The FS25-2 (Fence Station) combines all our great technology in one secure, waterproof enclosure; providing an all-in-one, solar powered fence Energiser and monitor solution for up to 20km of boundary fence or a lot more internal fencing.

Incorporating JVA's Cloud Router™ system with our JVA Jumbo Energiser Monitors; the Fence Station can power and monitor up to two separate sections of fence, detect any faults and notify you directly to your mobile phone or PC. Get peace of mind that your fence is working day and night, with the latest technology from JVA.

Features:

- Featuring our powerful JMB25ZM2 Energiser and Monitor
- Power up to two 10km sections of boundary fence
- Control in the palm of your hand with Cloud Router™
- Waterproof cabinet
- 330W solar panel with mounting bracket
- 20A MPPT Solar regulator
- Cellular Gateway works with any Australian mobile network
- Optional Wi-Fi Gateway connects multiple Wi-Fi devices to 3G/4G network
- Pre-wired with solar and battery leads



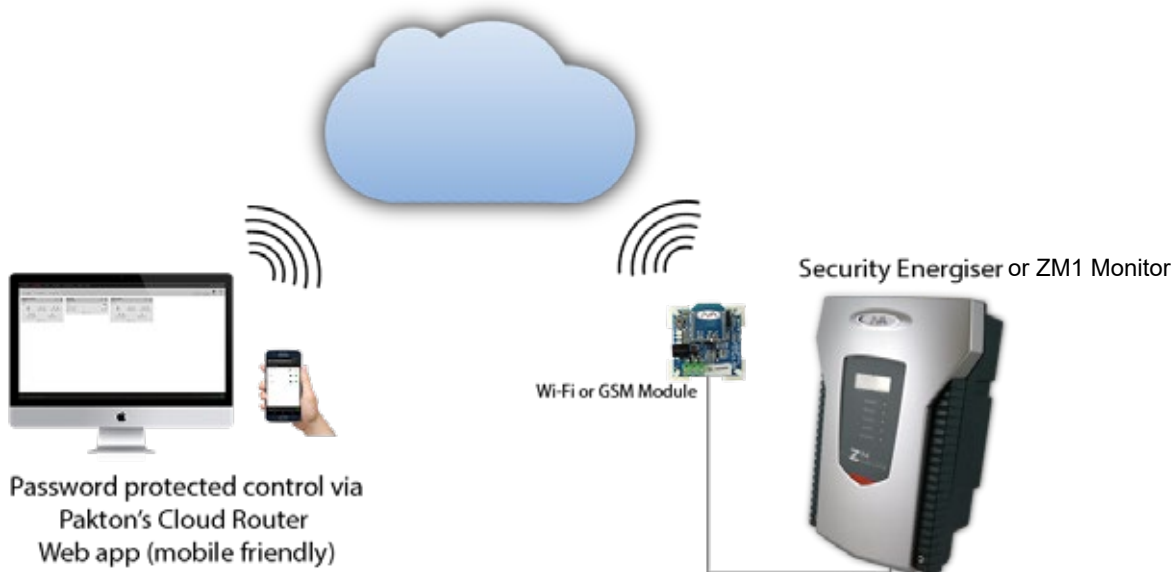
Model	Item #	Output	Cellular
FS25-2	PTE2500A	Peak Voltage: 9kV Output Energy: 25J Stored Energy: 34J	Sim: Micro Network: Any Australian 3G/4G

CLOUD ROUTER & ZM1 MONITOR

Cloud Router™ is designed and created by JVA as our own farm automation platform. For a small, monthly fee (\$2.50) it allows subscribers to monitor and control their Electric Fence Energisers. Subscribers log in using their personal user name and password to configure their 'site'. They can then turn the fence on or off, view the status and receive real time alerts. It can be accessed from any PC or smart phone. The site owner can also add three free users to the site who can also log in with various levels of control.

Features:

- Real-time notifications by SMS and Email
- Customisable site sharing with four user levels
- Event Log monitors site history
- At a glance site and device status



Package	Billed	View Site & Devices	Create & Control Sites	Configure & Share Sites	View Site Logs	Receive Notifications	Set Up Users
Free	Free	Y	N	N	N	N	N
Pro	Monthly	Y	Y	Y	Y	Y	Y



ZM1 Monitor is designed to be coupled with any standard Electric Fence Energiser to power and monitor an electric fence - bring electric fences into the 21st Century! The ZM1 connects to the Cloud Router™ using a Wi-Fi or Cellular gateway, providing full monitor and control capabilities.

Features:

- Monitor remotely using Cloud Router
- Start or end of fence monitoring
- Monitors ground voltage, fence voltage and fence current
- Control and program using LCD or Touch Keypad
- Requires 16Vac or 12Vdc external power supply

COMING SEPTEMBER 2021

Our most powerful and feature rich Electric Fence Energiser; the Jumbo Mains Battery (JMB) series is designed for large permanent Electric Fencing applications. The JMB series combines Energiser and Monitor technologies, and produces up to 46J of stored energy - currently the world largest battery powered IP Energiser™.

The JMB series also sees the introduction of the JVA Virtual Keypad™. This enables the programming, control and monitoring of the Energiser from your Wi-Fi enabled smart device (phone, tablet or laptop).

Features:

- Power and monitor up to two fence zones
- Built in Wi-Fi
- Controlled and monitored through JVA Virtual Keypad™
- Can be controlled and monitored through Cloud Router® using external Wi-Fi Gateway or Cellular Gateway
- Mains or battery powered, or mains with battery backup
- Power on demand - automatically adjust power to fence conditions
- Measures feed, return and ground voltages
- Contains our patented Distant Fault Detection (DFD™) - to sense faults along longer fence lines

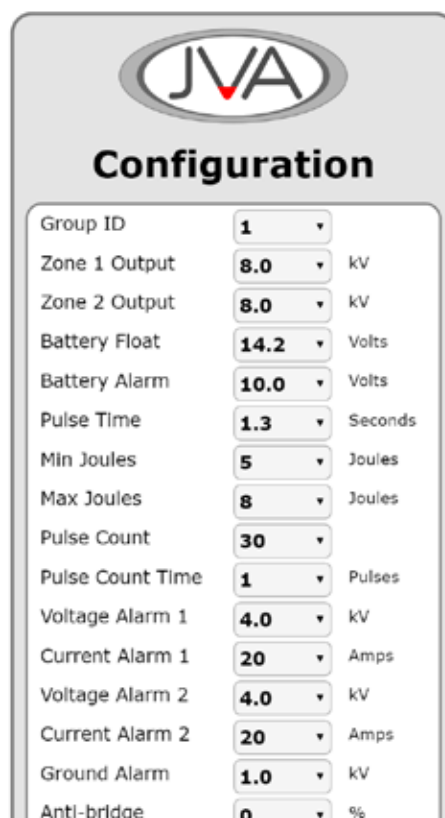


Model	Item #	Power Supply	Monitored Zones	Sectors	Stored Energy	Output Energy
JMB25ZM1	PTE2404	12/24V	1	0	36J	25J
JMB25ZM2	PTE2405	12/24V	2	0	2 x 18J	2 x 12.5J
JMB25ZM50	PTE2403	12/24V	1	Up to 50	36J	25J
JMB32ZM1	PTE2401	12/24V	1	0	46J	32J
JMB32ZM2	PTE2402	12/24V	2	0	2 x 23J	2 x 16J
JMB32ZM50	PTE2400	12/24V	1	Up to 50	46J	32J

The Virtual Keypad (VKP) is an interface that can be accessed by any Wi-Fi enabled device that can browse to a web page, i.e. phone, tablet, laptop etc. The Keypad is used to monitor, control or setup the JVA Jumbo Mains Battery Energiser Range.

Features:

- User-friendly 'web' interface
- No Internet connection is required
- Compatible with popular Internet browsers such as Chrome, Firefox, Safari and Edge
- Wi-Fi connection is password protected, but user configurable
- Control more than one zone at a time
- Easy configuration of voltages, alarm set-points, inputs, outputs and other options
- The display and configuration pages are tailored to the Jumbo model
- Detailed alarm and fault information is clearly displayed in text
- Sectoring the ZM50 is made easy with the VKP
- ZM50 sectors can be saved onto the Wi-Fi module as a backup



JVA also provides a range of accessories to enable quick and efficient monitoring of your Electric Fence.



Fence Monitor with multiple outputs provides an interface between the fence voltage and other monitoring systems. Useful for SCADA and other farm monitoring systems.

Features:

- Monitors the peak pulse voltage from any electric fence (Min 0.2J output)
- 12V supply with reverse polarity protection
- 0-10V analogue output
- RS232 serial output
- LED bar graph
- Form C relay with programmable alarm level
- IP65 weatherproof wall-mountable enclosure

Fault Finder clearly displays voltage and current with just one touch. Will also indicate fault direction to help you find faults fast.

Features:

- Water proof design
- Integrated (removable) belt clip
- Longer lasting battery
- Ergonomic case design
- Fingers are further away from High Voltage
- Bright red LED direction arrows
- 1 touch operation – Simple to use
- Clear indications of the direction of the fault
- Digital readout which shows fence voltage and current
- No wires, No clips, No tangles, No Shocks!
- Pocket size – Easy to carry
- Displays direction to a “high load” fault, not just current flow
- Will take you right to the fault, not leave you meters short!



Also available in a kit with case and short-out leads.



Fence Beeper

will beep when held close to a live electric fence.

Fence Light

clearly indicates the electric pulse on an electric fence.



Fence Light 2.0

featuring a new moulded plastic case. Clearly indicates the electric pulse on an electric fence.

Siren can be connected to the siren output on Jumbo Energisers, Z Range Energisers and Monitors.



Strobe can be connected to the strobe output on Jumbo Energisers, Z-Range Energisers and Monitors.



6V 4.2Ah Battery

Suitable for SV2 & RSG1 Energisers.

12V 7Ah Battery

Suitable for SV5, SV10 & Z Range Energisers.



12V 10Ah Battery

Lithium Iron (LiFePO₄) suitable for SV10



12V 100Ah Battery

Suitable for Fence Station (PTE2500A)



12V 120Ah Battery

Lithium Iron (LiFePO₄) suitable for Fence Station (PTE2500A)



Flood Gate Controller

Protects fence from shorting out when sections are flooded.





Remote Control Kit

Remotely turn your Z-Range Energiser or Monitor on and off. Connects to up to 30 remotes using secure rolling code technology.

12V Plug Pack

Suitable for MB1.5, MB3, & MB4.5 Energisers.



24V Plug Pack

Suitable for MB8, MB12 & MB16 Energisers



Accessory Kit

Neoprene belt pack for JVA Fault Finder. Comes with 2 x short out leads to allow for fence repairs.



V-Type Lightning Diverter

Adjustable spark gap lightning arrester.

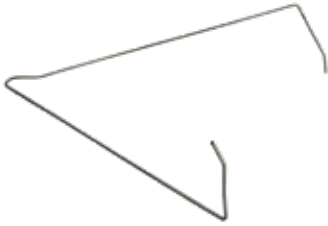
Multi-stage Lightning Diverter

Robust multi-stage lightning diverter and RFI filter protects your Energiser from lightning strikes and aids in reducing electrical interference



HARDWARE

OFFSETS



N-N201, N-N202, N-N203

CUT OUT SWITCHES



N-S710



N-S712



SP006

EARTH RODS



N-E103, N-E109,
N-ST2

BOBBINS



N-N671



N-N675



N-N683A



N-N686



N-SMBOB



SP011

WOOD POST INSULATOR



N-N673E



N-N698S



SP002



SP004



SP003



SP018

METAL POST INSULATORS



N-N688



N-N690JVA



SP001

LINE CLAMPS & BOLTS



N-N742HDG



N-S750



SP007

Products may differ in appearance or colour from those pictured

STRAINERS



N-N676



N-N678



N-N679



N-N760

TENSIONED FENCE REEL



N-S912



N--N770P

SP008

SP009

WARNING SIGNS



N-N701A



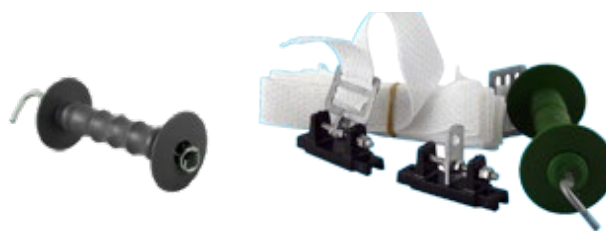
N-N701C

PET FENCE KIT



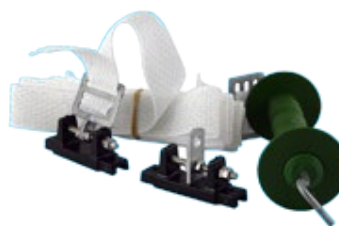
PTE2279

GATE HARDWARE



N-S790

N-S919S



N-S919T



N-UGS

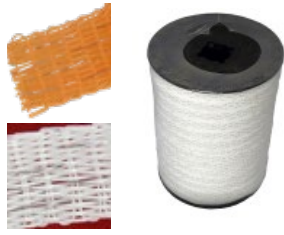
CABLES, POLITAPE & POLIWIRE

LEAD OUT CABLE



N-N730H, N-N730L,
N-N730S

12MM POLITAPE



SP022
SP023

POLIWIRES



SP014
SP015

40MM POLITAPE

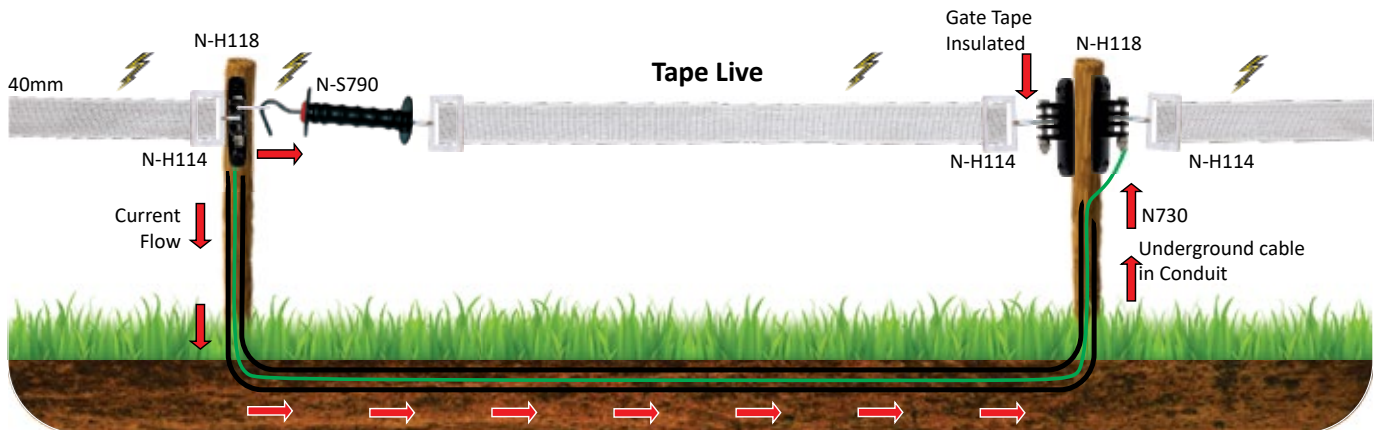


SP016
SP017

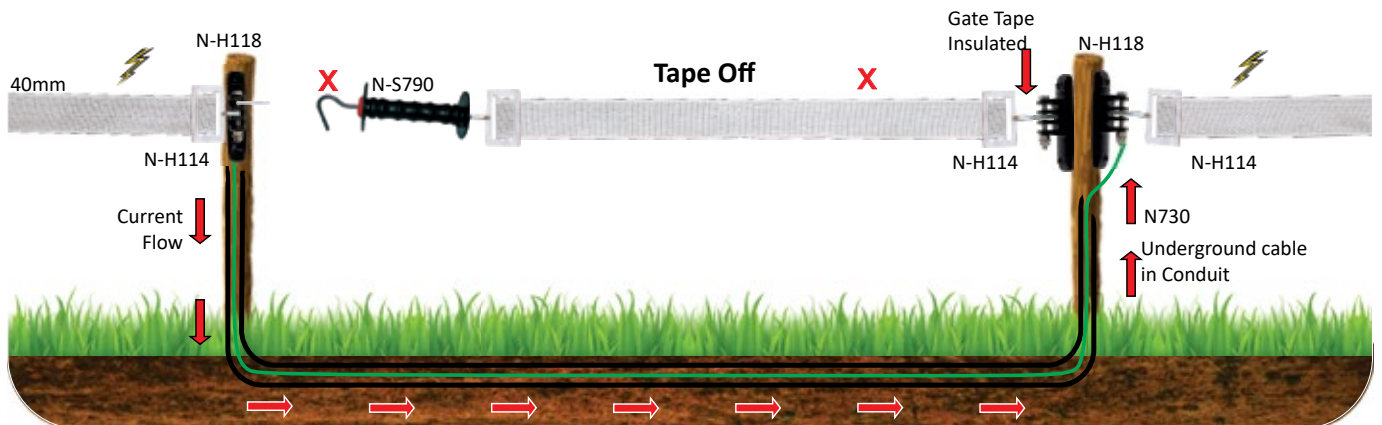
TAPE GATES

A classic example of a tape gate using our N-S919T tape gate kit. These can also be created using the N-S919S spring gate kit.

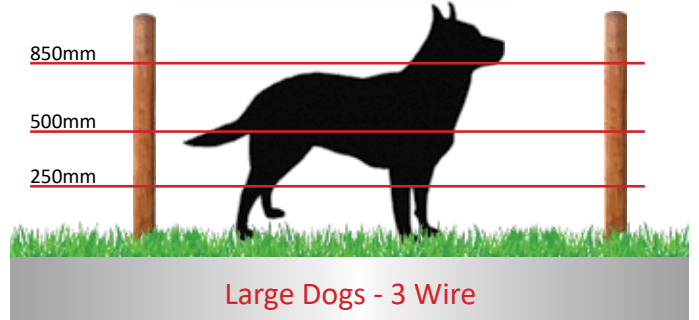
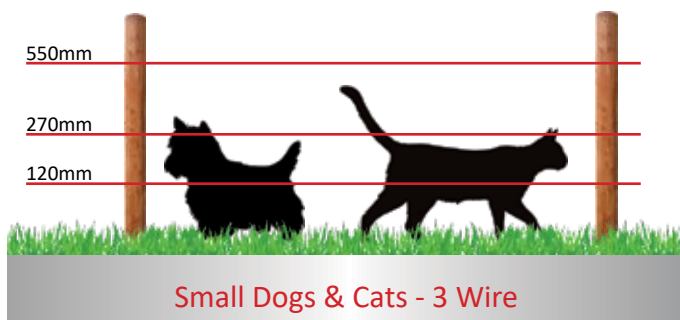
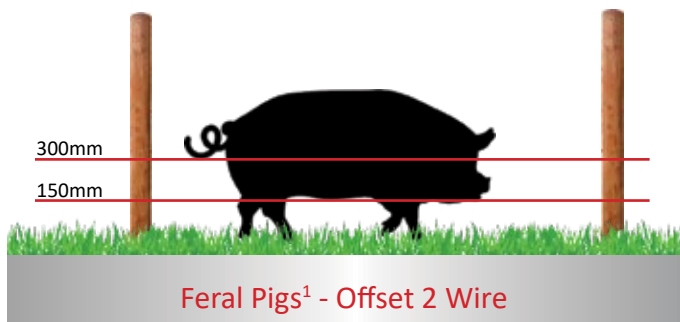
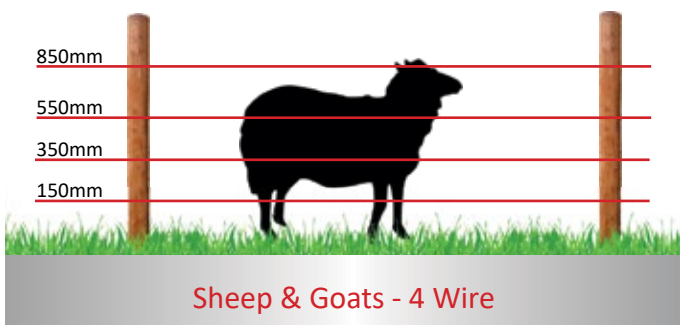
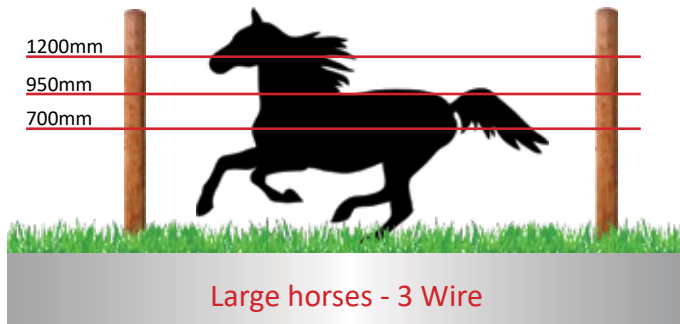
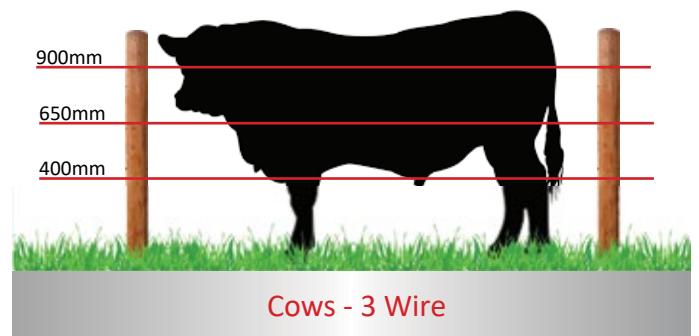
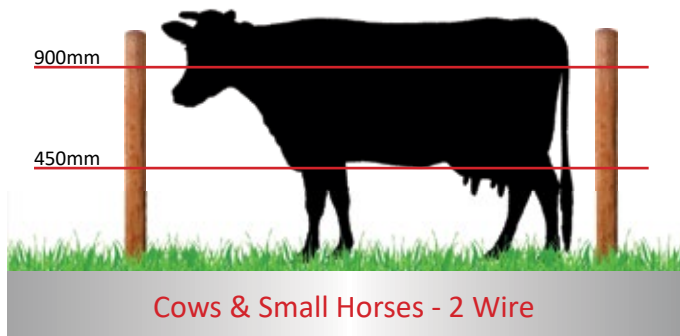
Gate Closed



Gate Open



FENCE HEIGHTS



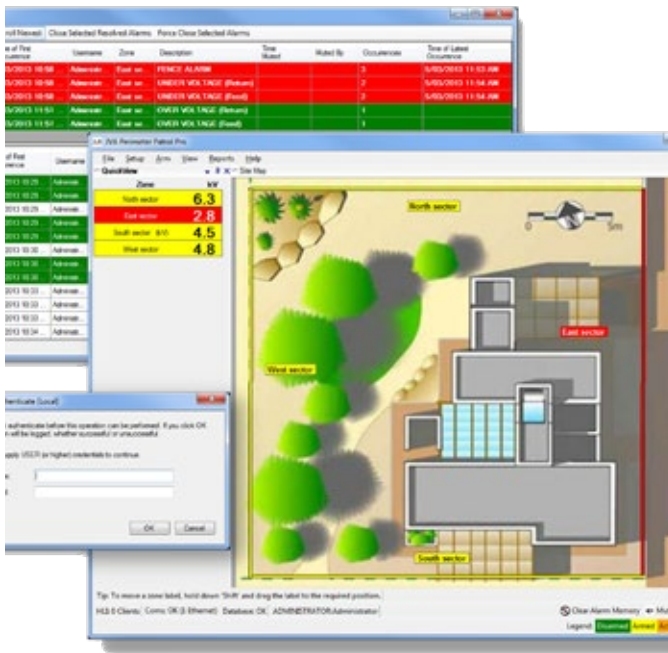
¹ Offset electric fence wires a minimum of 150mm from existing fence line which will be used as an earth line

² Larger Kangaroo may need more fence height - increase 2 wires at a time, alternating live and earth wires

³ It is generally recommended to use an offset wire for Wild Dogs - as with Feral Pig fences

*This is indicative only, we suggest you research the correct fence construction for your needs.

JVA Technologies draws on over 40 years of experience in some of the world's most testing security situations to produce a product range to satisfy the needs of the world's Security Electric Fencing markets. We provide an extensive range to service all requirements ranging from simple domestic, to high security government and industrial installations.



Email, phone or check our website for pricing and more information

JVA has Electric Fence solutions designed to keep your horses safe and secure. We understand that your horses are a large investment both monetarily and emotionally, for this reason we offer a number of Electric Fence Energisers suitable for Equine use, from small temporary setups to large, more permanent and secure installations.

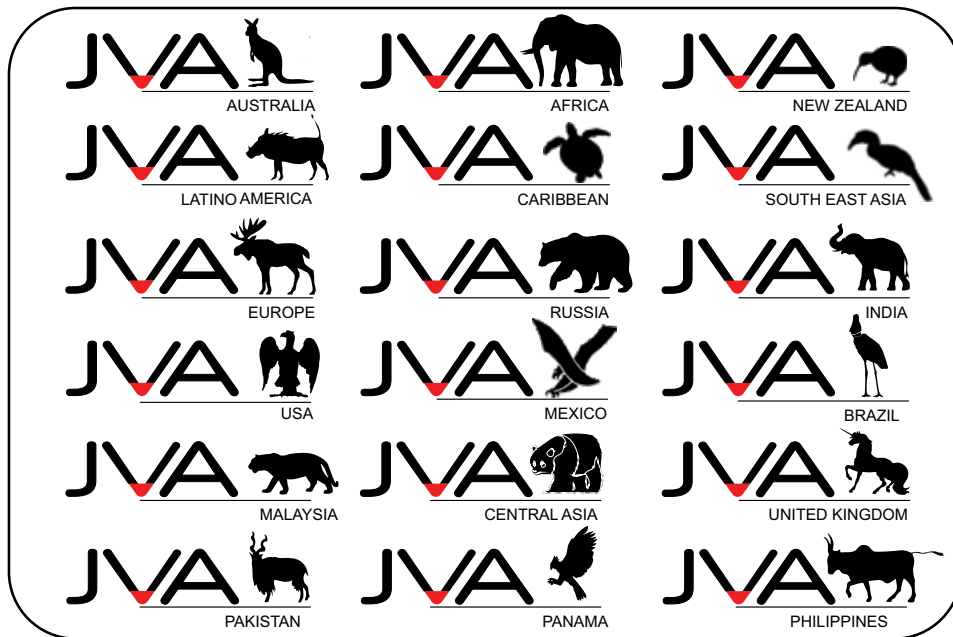


Equine catalogue available



ELECTRIC FENCING

QUALITY AGRICULTURAL ELECTRIC FENCING PRODUCTS



JVA is manufactured and distributed by Pakton Group Pty Ltd
Trading as JVA Technologies - ABN 93123853654

Head Office Australia

Phone (primary): 0499 000 455 or +61 499 000 455
Phone (secondary): 07 3103 0582 or +61 7 3103 0582
E-mail: sales@jva-fence.com.au
Skype: jva.technologies
Website: www.jva-fence.com.au

Address: 1 Helium Street
Narangba
Queensland
4504
Australia

South Africa

Phone: 011 397 3507
E-mail: swilliamson@jva-fence.com.au
Postal Address: PO Box 13898
Cascades 3202
Website: www.jva.security.com

Address: 219 Jet Park Road
Aerostar Business Park
Johannesburg
South Africa

Although the information presented in this product catalogue is believed to be accurate and reliable, no responsibility for inaccuracies can be assumed by JVA.
Performance data is typical only and variations owing to installation methods are normal.

www.jva-fence.com.au