



# Perimeter Patrol™

PTE0321 | PTE0322

## Overview:

Perimeter Patrol™ adds PC connectivity, communications and control to your security electric fence, giving you the peace of mind that comes from being able to check that your fence is working wherever you are.

Perimeter Patrol™ runs on a standard Microsoft Windows PC connected to JVA Security Electric Fence Energisers via PAE223 (USB), PAE100 (RS485) or PAE212 (TCP/IP Ethernet) adaptors.

## Perimeter Patrol™ Lite:

The Perimeter Patrol™ Lite software package enables up to four energisers to be monitored and controlled from a PC. Perimeter Patrol™ Lite is free for owners of Z-series energisers.

## Perimeter Patrol™ Pro:

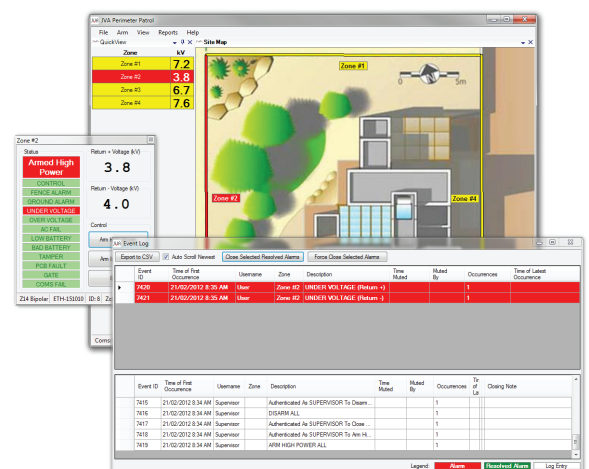
Perimeter Patrol™ Pro is commercial software. It provides the functionality required for industrial or commercial installations.

## For more information:

See the Website at: <http://www.jva-fence.com.au>

## Version Comparison Table:

Feature	Lite	Pro
View & Control Energiser Zones [1]	Yes	Yes
View & Control Zone Monitors	No	Yes
Support Multiple Sectors Per Zone [2]	No	Yes
Map-Oriented Zone Mimic Screen	Yes	Yes
Automatically Control on Schedule	Yes	Yes
Alarm Display and Sound	Yes	Yes
Email on Alarm	Yes	Yes
Ethernet (TCP/IP) Communication Mode	No	Yes
Serial Communication Mode	Yes	Yes
User Authentication	No	Yes
Full Screen Mode Preventing Access to Other Applications	No	Yes
Event Logging with Viewer and Automatic Archival	No	Yes
Software Keypad	No	Yes
Administrator's Full System Controller	No	Yes





## Specifications:

Operating System		Microsoft Windows 7, Server 2003, Vista, XP
Logging Database (not available in Lite)		Microsoft SQL Server 2008 Express Edition
Communications Interface		TCP/IP or Serial Port
Minimum CPU		Intel or compatible Pentium III 500 MHz or faster processor (1GHz or faster recommended)
Minimum RAM		1GB recommended on Windows XP 2GB recommended on Windows 7, Vista, Server 2003
Scheduled Control	Repeats	Weekly
	Granularity	30 Minutes
Email Support		SMTP, SSL, Authentication
Maximum Number of Zones	Lite	4
	Pro	250 (limit dependent on system configuration)
User Levels (not available in Lite)	User	View Zone Voltages and Alarms
	Supervisor	All User Tasks Above Control Energisers Close Resolved Alarms Exit Full Screen Mode
	Administrator	All User and Supervisor Tasks Above Modify System Configuration
Integration of Legacy Equipment		Via contact inputs and relay outputs

## Product Codes:

PAE0321	Perimeter Patrol 4 Zone Base System <ul style="list-style-type: none"> <li>- Operates as Perimeter Patrol Lite until activated</li> <li>- Operates as Perimeter Patrol Pro after activation</li> </ul>
PAE0322	One extra zone for Perimeter Patrol Pro <ul style="list-style-type: none"> <li>- Add as many extra zones to Perimeter Patrol Pro as required</li> </ul>

[1] Any energiser from the JVA Z-series range (excludes ZM-series zone monitors).

[2] A zone is defined as a section of fence powered by a single energiser. A sector is defined as a sub-section of that zone. The ZM20 for example supports up to 20 sectors per zone. Where a single energiser is powering a large zone, having multiple sectors can help in locating a fault more precisely.